



Amber Valley

District

This profile was published on 3 July 2018

Local Authority Health Profile 2018

This profile gives a picture of people's health in Amber Valley. It is designed to help local government and health services understand their community's needs, so that they can work together to improve people's health and reduce health inequalities.

Health in summary

The health of people in Amber Valley is varied compared with the England average. About 15% (3,000) of children live in low income families. Life expectancy for women is lower than the England average.

Health inequalities

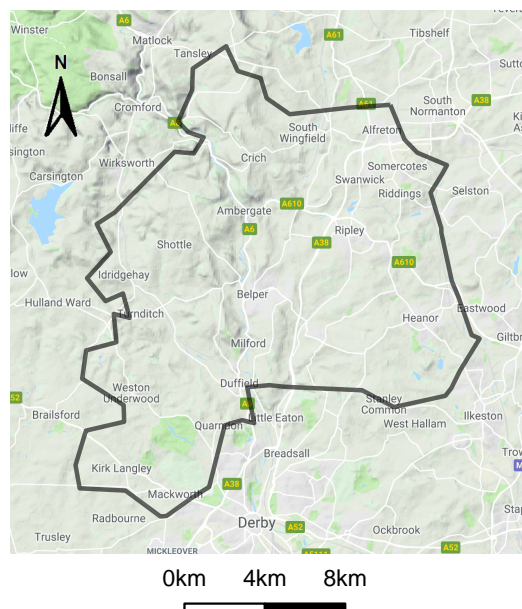
Life expectancy is 9.1 years lower for men and 8.0 years lower for women in the most deprived areas of Amber Valley than in the least deprived areas.**

Child health

In Year 6, 17.8% (210) of children are classified as obese. The rate of alcohol-specific hospital stays among those under 18 is 33*. This represents 8 stays per year. Levels of teenage pregnancy, breastfeeding initiation and smoking at time of delivery are worse than the England average.

Adult health

The rate of alcohol-related harm hospital stays is 703*, worse than the average for England. This represents 906 stays per year. The rate of self-harm hospital stays is 201*. This represents 241 stays per year. Rates of sexually transmitted infections and TB are better than average. The rate of statutory homelessness is worse than average. Rates of violent crime and the percentage of people in employment are better than average.



Contains National Statistics data © Crown copyright and database right 2018
Contains OS data © Crown copyright and database right 2018
Map data © 2018 Google
Local authority displayed with ultra-generalised clipped boundary

For more information on priorities in this area, see:

- www.derbyshire.gov.uk
- <http://observatory.derbyshire.gov.uk>

Visit www.healthprofiles.info for more area profiles, more information and interactive maps and tools.

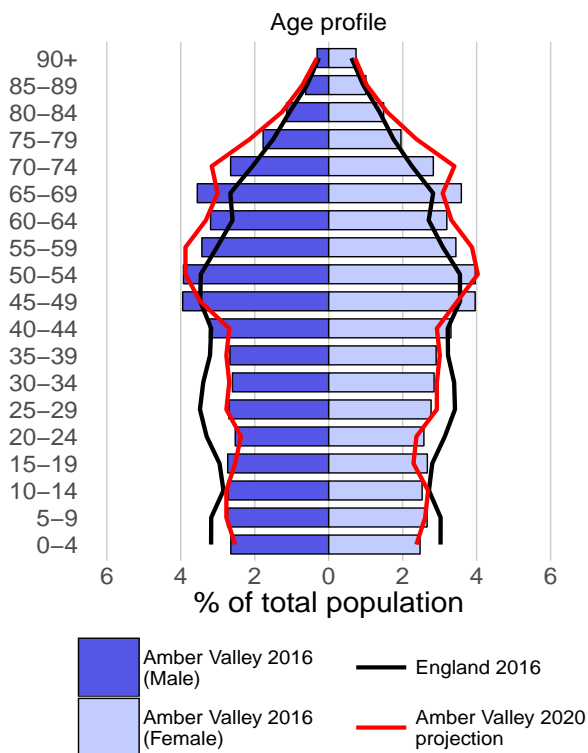
Local Authority Health Profiles are Official Statistics and are produced based on the three pillars of the [Code of Practice for Statistics](#): Trustworthiness, Quality and Value.

Follow @PHE_uk on Twitter

* rate per 100,000 population

** see [page 3](#)

Population



Understanding the sociodemographic profile of an area is important when planning services. Different population groups may have different health and social care needs and are likely to interact with services in different ways.

	Amber Valley (persons)	England (persons)
Population (2016)*	125	55,268
Projected population (2020)*	127	56,705
% population aged under 18	19.1%	21.3%
% population aged 65+	21.6%	17.9%
% people from an ethnic minority group	**	13.6%

* thousands, ** value suppressed due to small numbers

Source:
Populations: Office for National Statistics licensed under the Open Government Licence
Ethnic minority groups: Annual Population Survey, October 2015 to September 2016

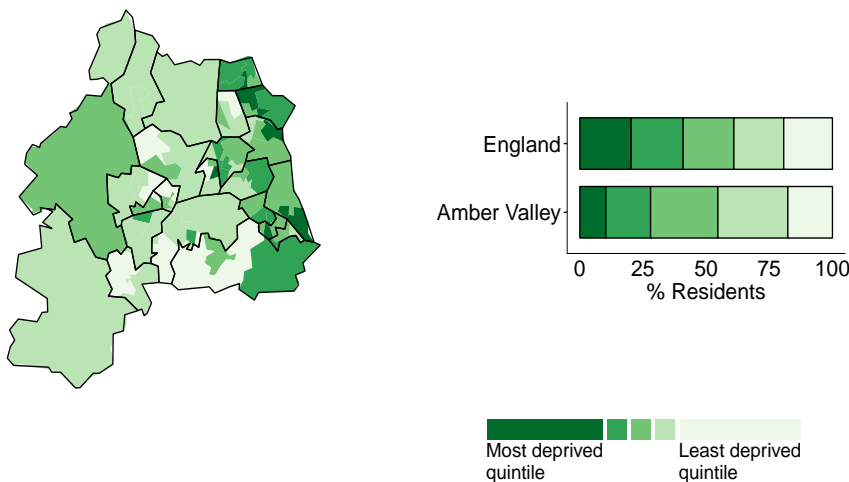
Deprivation

The level of deprivation in an area can be used to identify those communities who may be in the greatest need of services. These maps and charts show the Index of Multiple Deprivation 2015 (IMD 2015).

National

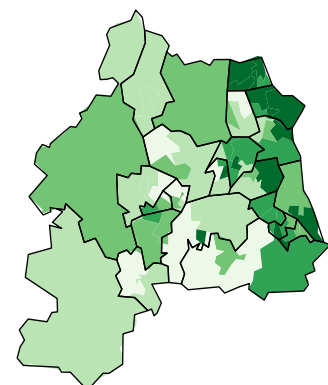
The first of the two maps shows differences in deprivation in this area based on national comparisons, using national quintiles (fifths) of IMD 2015, shown by lower super output area. The darkest coloured areas are some of the most deprived neighbourhoods in England.

The chart shows the percentage of the population who live in areas at each level of deprivation.



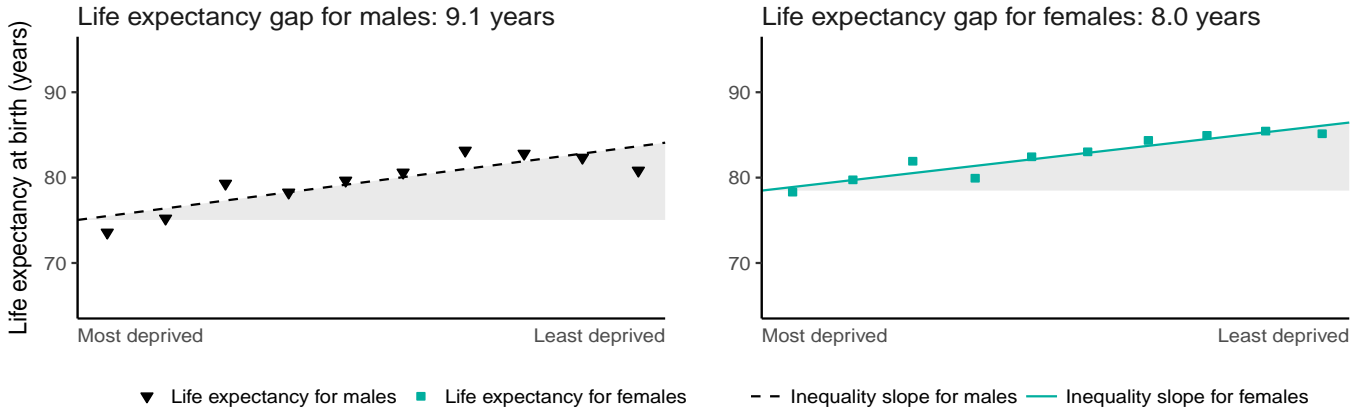
Local

The second map shows the differences in deprivation based on local quintiles (fifths) of IMD 2015 for this area.



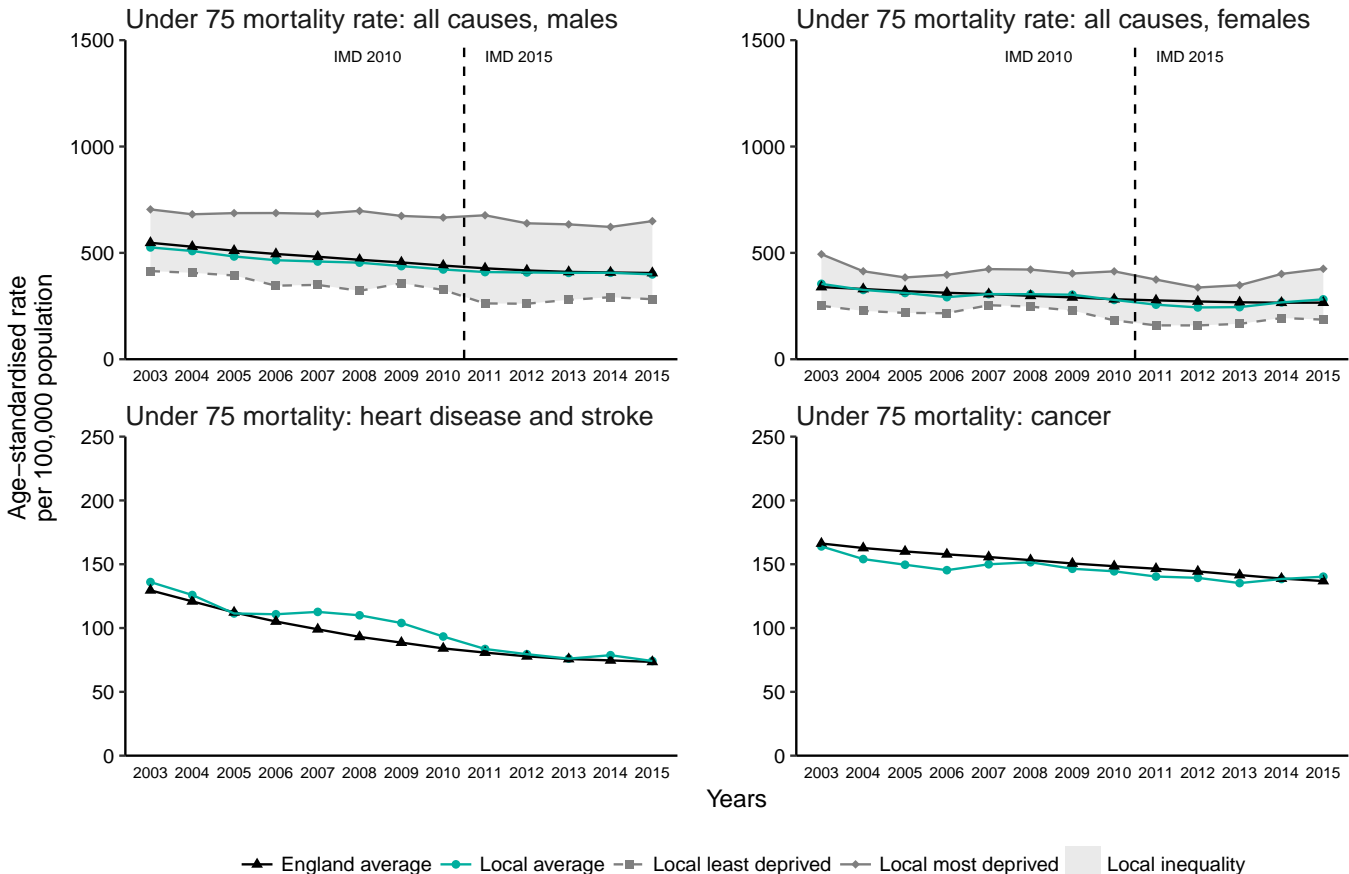
Health inequalities: life expectancy

The charts show life expectancy for males and females within this local authority for 2014-16. The local authority is divided into local deciles (tenths) by deprivation (IMD 2015). The life expectancy gap is the difference between the top and bottom of the inequality slope. This represents the range in years of life expectancy from most to least deprived within this area. If there was no inequality in life expectancy the line would be horizontal.



Trends over time: under 75 mortality

These charts provide a comparison of the trends in death rates in people under 75 between this area and England. For deaths from all causes, they also show the trends in the most deprived and least deprived local quintiles (fifths) of this area.



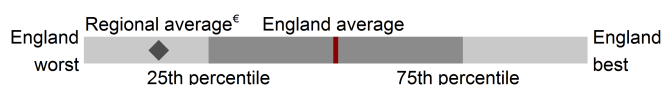
Data from 2010-12 onwards have been revised to use IMD 2015 to define local deprivation quintiles (fifths), all prior time points use IMD 2010. In doing this, areas are grouped into deprivation quintiles using the Index of Multiple Deprivation which most closely aligns with the time period of the data. This provides a more accurate way of examining changes over time by deprivation.

Data points are the midpoints of three year averages of annual rates, for example 2005 represents the period 2004 to 2006. Where data are missing for local least or most deprived, the value could not be calculated as the number of cases is too small.

Health summary for Amber Valley

The chart below shows how the health of people in this area compares with the rest of England. This area's value for each indicator is shown as a circle. The England average is shown by the red line, which is always at the centre of the chart. The range of results for all local areas in England is shown as a grey bar. A red circle means that this area is significantly worse than England for that indicator. However, a green circle may still indicate an important public health problem.

- Significantly worse than England average
- Not significantly different from England average
- Significantly better than England average
- Not compared



	Indicator names	Period	Local count	Local value	Eng value	Eng worst		Eng best
Life expectancy and causes of death	1 Life expectancy at birth (Male)	2014 – 16	n/a	79.5	79.5	74.2		83.7
	2 Life expectancy at birth (Female)	2014 – 16	n/a	82.4	83.1	79.4		86.8
	3 Under 75 mortality rate: all causes	2014 – 16	1,256	339.2	333.8	545.7		215.2
	4 Under 75 mortality rate: cardiovascular	2014 – 16	278	74.2	73.5	141.3		42.3
	5 Under 75 mortality rate: cancer	2014 – 16	526	140.2	136.8	195.3		99.1
	6 Suicide rate	2014 – 16	42	12.4	9.9	18.3		4.6
Injuries and ill health	7 Killed and seriously injured on roads	2014 – 16	145	39.0	39.7	110.4		13.5
	8 Hospital stays for self-harm	2016/17	241	200.6	185.3	578.9		50.6
	9 Hip fractures in older people (aged 65+)	2016/17	141	544.9	575.0	854.2		364.7
	10 Cancer diagnosed at early stage	2016	283	49.1	52.6	39.3		61.9
	11 Diabetes diagnoses (aged 17+)	2017	n/a	78.6	77.1	54.3		96.3
	12 Dementia diagnoses (aged 65+)	2017	1,189	68.3	67.9	45.1		90.8
Behavioural risk factors	13 Alcohol-specific hospital stays (under 18s)	2014/15 – 16/17	24	33.5	34.2	100.0		6.5
	14 Alcohol-related harm hospital stays	2016/17	906	703.3	636.4	1,151.1		388.2
	15 Smoking prevalence in adults (aged 18+)	2017	15,392	15.2	14.9	24.8		4.6
	16 Physically active adults (aged 19+)	2016/17	n/a	65.1	66.0	53.3		78.8
	17 Excess weight in adults (aged 18+)	2016/17	n/a	60.3	61.3	74.9		40.5
Child health	18 Under 18 conceptions	2016	53	25.9	18.8	36.7		3.3
	19 Smoking status at time of delivery	2016/17	162	14.5	10.7	28.1		2.3
	20 Breastfeeding initiation	2016/17	887	68.7	74.5	37.9		96.7
	21 Infant mortality rate	2014 – 16	20	5.5	3.9	7.9		0.0
	22 Obese children (aged 10–11)	2016/17	210	17.8	20.0	29.2		8.8
Inequalities	23 Deprivation score (IMD 2015)	2015	n/a	18.1	21.8	42.0		5.0
	24 Smoking prevalence: routine and manual occupations	2017	n/a	25.2	25.7	48.7		5.1
Wider determinants of health	25 Children in low income families (under 16s)	2015	2,995	14.6	16.8	30.5		5.7
	26 GCSEs achieved	2015/16	727	57.5	57.8	44.8		78.7
	27 Employment rate (aged 16–64)	2016/17	63,100	80.9	74.4	59.8		88.5
	28 Statutory homelessness	2016/17	78	1.4	0.8			
	29 Violent crime (violence offences)	2016/17	1,183	9.5	20.0	42.2		5.7
Health protection	30 Excess winter deaths	Aug 2013 – Jul 2016	266	22.1	17.9	30.3		6.3
	31 New sexually transmitted infections	2017	328	419.8	793.8	3,215.3		266.6
	32 New cases of tuberculosis	2014 – 16	11	3.0	10.9	69.0		0.0

For full details on each indicator, see the definitions tab of the Health Profiles online tool: www.healthprofiles.info

Indicator value types

1, 2 Life expectancy - Years 3, 4, 5 Directly age-standardised rate per 100,000 population aged under 75 6 Directly age-standardised rate per 100,000 population aged 10 and over 7 Crude rate per 100,000 population 8 Directly age-standardised rate per 100,000 population 9 Directly age-standardised rate per 100,000 population aged 65 and over 10 Proportion - % of cancers diagnosed at stage 1 or 2 11 Proportion - % recorded diagnosis of diabetes as a proportion of the estimated number with diabetes 12 Proportion - % recorded diagnosis of dementia as a proportion of the estimated number with dementia 13 Crude rate per 100,000 population aged under 18 14 Directly age-standardised rate per 100,000 population 15, 16, 17 Proportion - % 18 Crude rate per 1,000 females aged 15 to 17 19, 20 Proportion - % 21 Crude rate per 1,000 live births 22 Proportion - % 23 Index of Multiple Deprivation (IMD) 2015 score 24, 25 Proportion - % 26 Proportion - % 5 A*-C including English & Maths 27 Proportion - % 28 Crude rate per 1,000 households 29 Crude rate per 1,000 population 30 Ratio of excess winter deaths to average of non-winter deaths (%) 31 Crude rate per 100,000 population aged 15 to 64 (excluding Chlamydia) 32 Crude rate per 100,000 population

€"Regional" refers to the former government regions.

If 25% or more of areas have no data then the England range is not displayed.

Please send any enquiries to healthprofiles@phe.gov.uk

You may re-use this information (not including logos) free of charge in any format or medium, under the terms of the Open Government Licence. To view this licence, visit www.nationalarchives.gov.uk/doc/open-government-licence/version/3